

ELYSIAN FIELDS ISD

Long-Range Facility Planning Committee

Meeting 4

August 22, 2023



This information is provided for educational purposes only to facilitate a general understanding of the law or other regulatory matter. This information is neither an exhaustive treatment on the subject nor is this intended to substitute for the advice of an attorney or other professional advisor. Consult with your attorney or professional advisor to apply these principles to specific fact situations.

© 2023 Texas Association of School Boards, Inc. All rights reserved.

Welcome



Objectives

- Board Charge, Vision, LRFP Process
- Guiding Principles
- Safety & Security Update
- Work Groups
- Facility Tour



Board Charge, Vision, LRFP Process

Grady Slaydon, TASB Facility Services



Board's Charge

1. Review the Educational Facility Assessment, Financial Assessment, Educational Program, and Demographic Data.
2. Prioritize projects into a Long-Range Facility Plan to be recommended for adoption by the Board.
3. Make a recommendation of financial options for the District to pursue to fund the plan.



LRFP Committee Vision

Provide safe and sustainable facilities that are designed to enhance the growth and meet the diverse needs of all stakeholders.



Elysian Fields ISD

Facility Planning and Bond Planning Outline Calendar

DATE	TIME	LOCATION	MEETING TYPE	TOPIC
June 12, 2023			Board Meeting	Approval of Committee Roster and Charge
July 11, 2023	6:00 PM	EFHS Auditorium	Committee Meeting 1	Committee Meeting One - Drink from the Firehose: LRFP, Finance, Enrollment, EFA
July 25, 2023	6:00 PM	EFHS Cafeteria	Committee Meeting 2	Committee Meeting Two - EFA Findings, Guiding Principles
August 8, 2023	6:00 PM	EFES Cafeteria	Committee Meeting 3	Committee Meeting Three - Work Groups
August 14, 2023	6:00 PM	Board Room	Board Meeting	Facility Committee Update Presentation
August 22, 2023	6:00 PM	EFMS Library	Committee Meeting 4	Committee Meeting Four - Work Groups
September 5, 2023	6:00 PM	EFHS Library	Committee Meeting 5	Committee Meeting Five - Work Group Presentations to Committee
September 19, 2023	6:00 PM	EFES Library	Committee Meeting 6	Committee Meeting Six - Priority Vote
September 20, 2023	6:00 PM	EFISD Administration	Committee Meeting 7	Committee Panel Prep Meeting or Additional Committee Meeting
October 2, 2023	6:00 PM	EFISD Administration	Board Meeting	Committee Presentation to Board
Weeks 23-32	TBD	Board Room	Board Meetings	Board Workshops, Tours, Public Forums
December 11, 2023	6:00 PM	Board Room	Board Meeting	Adoption of Facility Plan



Housekeeping

Be Sure to Sign In and Pick Up Binder & Handouts
for each Meeting

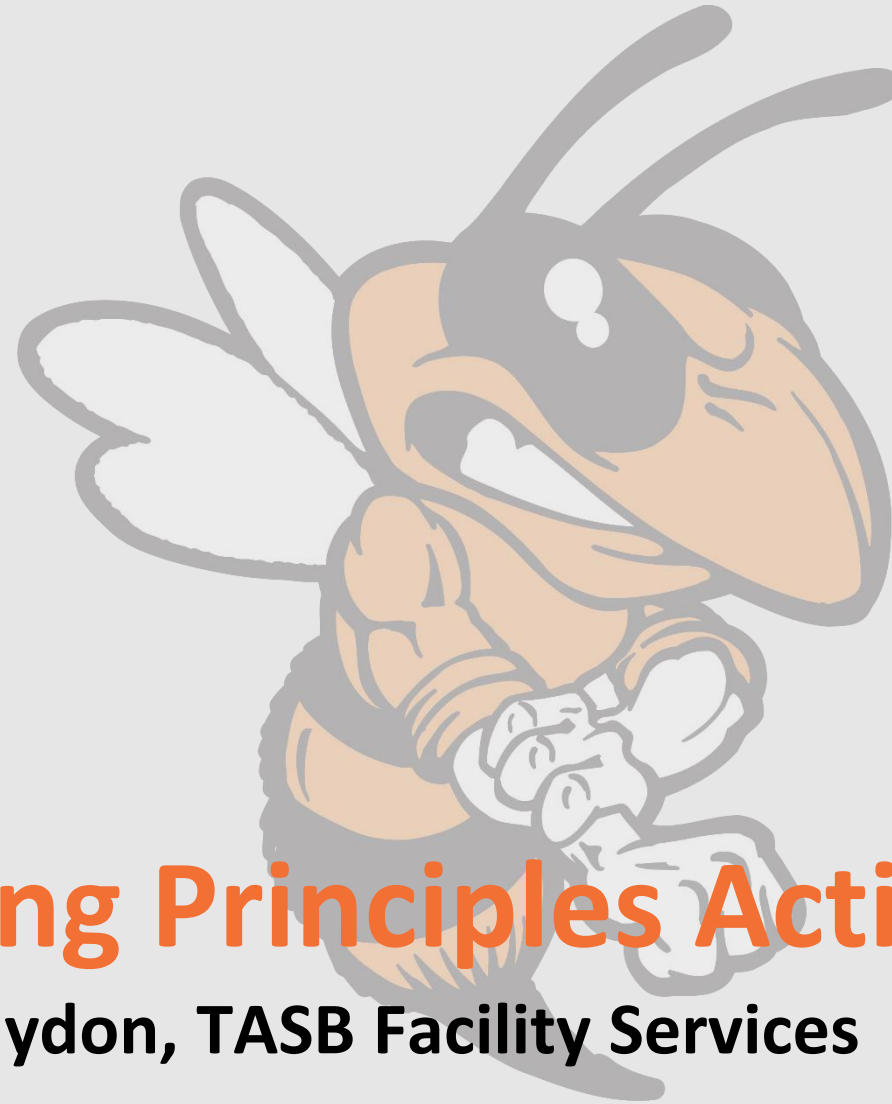
Take Care of Yourself!

Silence Phones

What Happens in Committee Stays in Committee

Questions and Ideas in the Idea Box





Guiding Principles Activity

Grady Slaydon, TASB Facility Services



Guiding Principles Voting

Maintenance budget matches Capital Expenditures	21	36
Easily maintained and functional facilities	15	
Safety, Security, & Health Safety for all staff and students	27	27
Safe & Secure. ADA Compliant		
Aesthetically pleasing	20	20
Upgrade, modernize and repurpose facilities to meet 21st Century demands.	11	17
Adequate space that flows	2	
Maximize utilization	4	
Room to grow	0	
Better technology for students	17	17
Adequate athletic facilities for girls, boys and visitors.	9	9
Comfortable environment (HVAC, Lights, Furniture)	1	1

Guiding Principles

- Provide easily maintained and functional buildings with adequate maintenance budgeting.
- Provide Safety, Security, and Health Safety for all students and staff.
- Upgrade, modernize and repurpose facilities to meet 21st Century demands.
- Improve infrastructure to better support the technological needs of students and staff.
- Provide aesthetically pleasing facilities





Safety & Security



HB 3

Harrison County Sheriff's Department

Panola County Sheriff's Department

Texas Forestry Service

Quality Consulting & Security Services (Bullard)



School Safety Standards

Exterior doors, exterior classroom doors, and portable doors should operate as intended, are required to remain closed, locked, and latched and allow for emergency egress from the inside (while remaining locked).



School Safety Standards

Windowed doors on the ground level or windows that are adjacent to or near a door and are large enough to allow someone to enter if broken must be reinforced with entry-resistant film unless within a secured area.



School Safety Standards

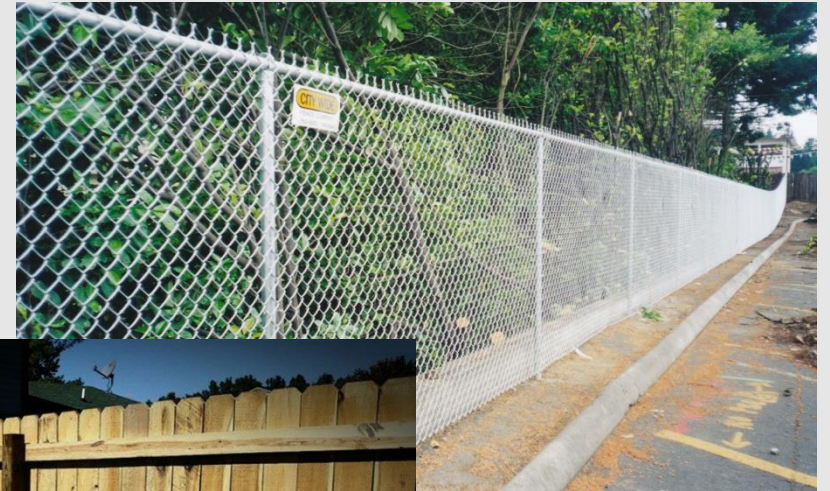
Exterior door sweeps must be conducted weekly to certify that all doors are properly closed, locked, and latched.



Approved Safety Fencing

If enclosed by a fence or wall, utilizes a fence or wall at least 6 feet high with design features that prevent it from being easily scalable, such as stone, wrought iron, chain link with slats or wind screen, or chain link topped with an anti-scaling device, or utilizes a fence or wall at least 8 feet high;

Fencing Utilized by EF ISD



Key Card Access - Proximity



Police Department





Work Groups



Work Groups

- **Campus Based**
 - Elementary – EFES & Administration
 - Middle School – EFMS & Transportation
 - High School - EFHS
- **Evaluate Projects**
 1. Assign Each Project a Priority
 - 1 – Urgent, Critically Important, or Essential
 - 2 – Mild Urgency and Importance
 - 3 – Not Urgent, Marginally Important
 2. Check for Consistency



Work Groups

Maintenance Projects

- Projects Identified by EFISD
- To be Included in EFISD Maintenance Plan
- 72 Projects Identified to be Complete Over the Next Several Years



<https://facilitydashboard.tasb.org/public/?districtname=Elysian-Fields-ISD>





Facility Tour – Middle School



Facility Tour – Middle School

- Tours by Work Group
- Take your Facility Tour Item List
- Be Ready to Share:
 - General Impressions
 - Good Things
 - Surprises
 - Things that need to change

Be back by 7:50!



Next Meeting : September 5th High School Library





Questions?

Homework:

Review Projects
Visit Dashboard

